

CARE–BSDD Kenya Series

From Demographic Change to Care-Responsive Budgeting



Informing A Smarter World



February – March 2026

Session 2



Informing A Smarter World



Introducing the Demographic Dividend Monitoring Index (DDMI): Tracking Readiness for Demographic Gains

CARE–BSDD Kenya Series

From Demographic Change to Care-Responsive Budgeting

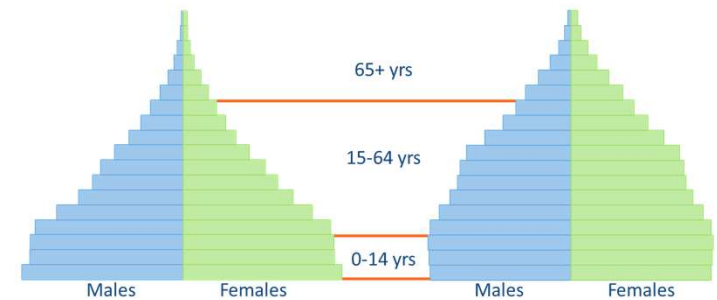
February 10, 2026

Recalling the Point of Departure

In Webinar 1

- ⇒ Demographic transition is a structural transformation, not a theory.
- ⇒ It reshapes care needs across the life course.
- ⇒ Demographic change actively produces pressures on care systems.
- ⇒ These pressures emerge long before policies and institutions respond

➔ *Given demographic change already underway, how prepared are countries to benefit from it?*



Today's Agenda

⇒ *From demographic transition to the question of readiness*

From Demographic Transition to Readiness: Why the Dividend Is Not Automatic

Introducing the DDMI: Measuring Structural Readiness

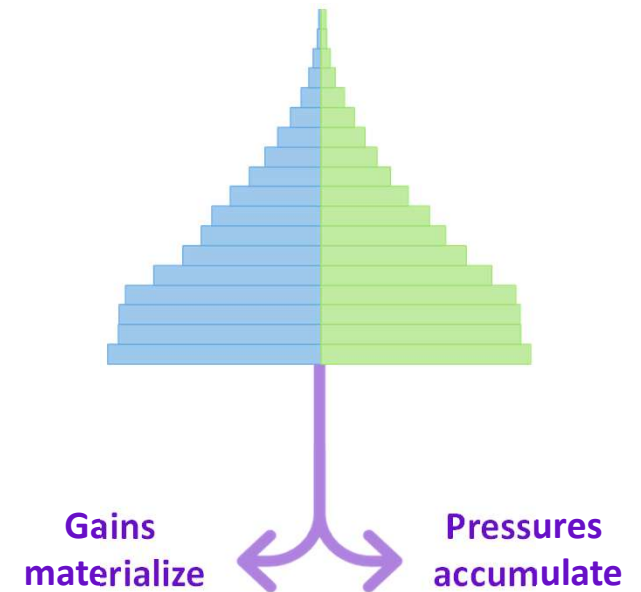
Guest Insight: Reading DDMI Results Through a Care Lens

Mini-Case Illustration: What the DDMI Reveals Before Crisis

Q&A

The Demographic Dividend is not Automatic

- ⇒ Many countries are in demographic transition.
- ⇒ Very few are actually ready.
- ⇒ Age structure is not enough.
- ⇒ A favorable age structure guarantees nothing.
- ⇒ We need to measure readiness, not just potential.



➔ *If the dividend is not automatic, then what are we missing?*

Before Policies, Before Budgets

⇒ **Public decisions often miss the problem**

- Actions are taken sector by sector.
- Responses focus on visible emergencies.
- Structural vulnerabilities remain unread.

⇒ **We need first**

- To see where vulnerabilities accumulate.
- To identify which constraints block demographic gains.
- To understand how these constraints translate into care pressures.

➔ *This is the space where a diagnostic tool becomes necessary.*

Visible Policy Responses

Sectoral Decisions



Accumulating Structural Vulnerabilities

Fragmented Responses



Rising Care Pressures

Absorbed By Households

We act on symptoms, not on structure.

What the DDMI Measures — Without Technicity

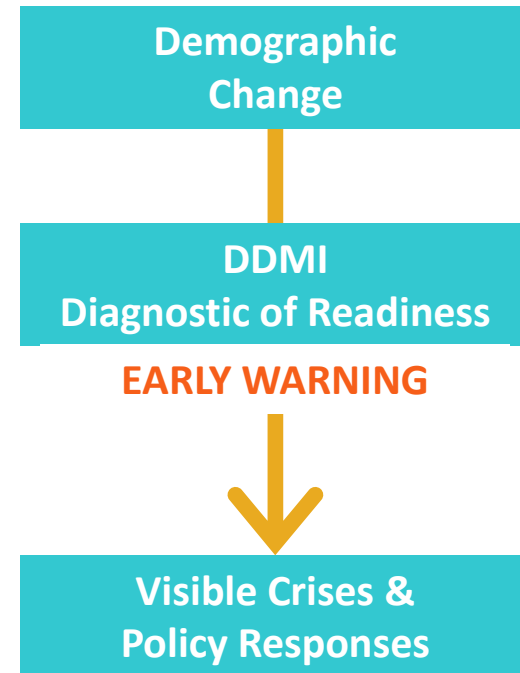
⇒ *A diagnostic tool for readiness*

The question it answers

Are the conditions in place to transform demographic change into real gains?

What the DDMI does not do

- Does not allocate budgets
- Does not prescribe sectoral policies



The DDMI sits upstream, before crises and decisions.

Reading Demographic Readiness through the DDMI



**Prof. Moses Kinyanjui
Muriithi**

Associate Professor of
Economics, University of
Nairobi

- ⇒ *Interpreting demographic readiness through the DDMI.*
- ⇒ *From indicators to meaning, structure, and early signals.*

Session 2 – Guest Speaker – Pr. MURIITHI - DEDS



Informing A Smarter World



Reading Demographic Readiness Through the DDMI

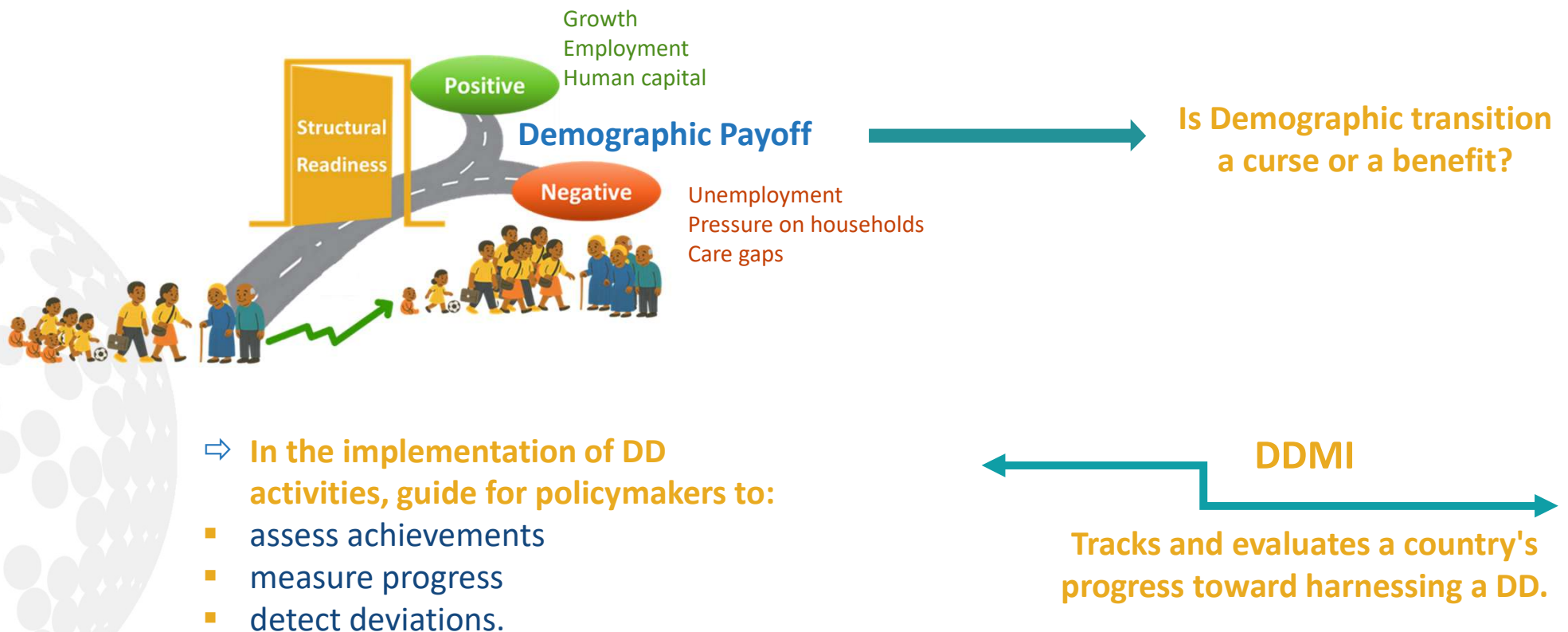
CARE–BSDD Kenya Series

From Demographic Change to Care-Responsive Budgeting

February 10, 2026

WHY MEASURE READINESS, NOT JUST TRANSITION

- ⇒ *Demographic change creates potential economic benefits.*
- ⇒ *Outcomes depend on structural conditions.*
- ⇒ *Divergent development trajectories.*



⇒ **In the implementation of DD activities, guide for policymakers to:**

- assess achievements
- measure progress
- detect deviations.

DIMENSIONS, ONE SYSTEM: According to the countries' DD Roadmap

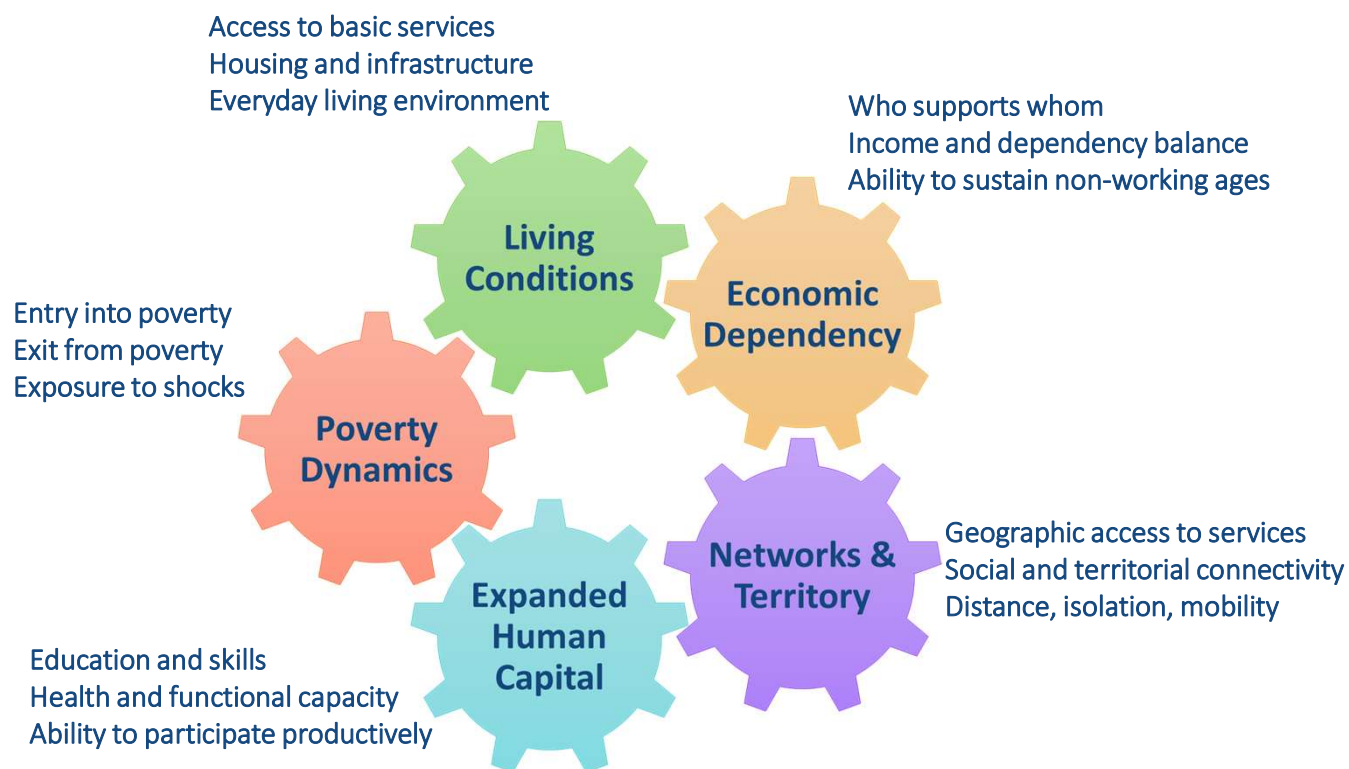


⇒ *CREG roadmap*

⇒ *What matters here is not each dimension on its own, but how they interact as a system.*

FROM DIMENSIONS TO LIVED REALITY

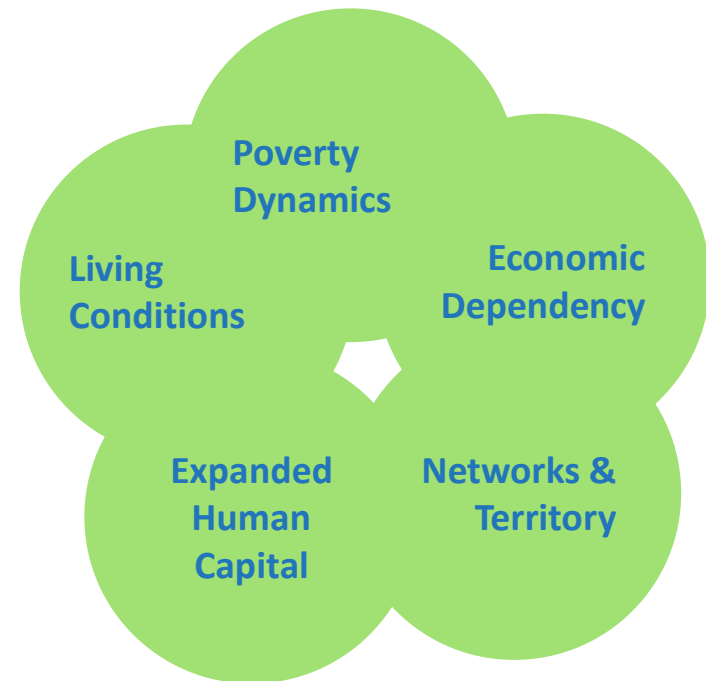
- ⇒ *Five dimensions that shape everyday realities for households.*
- ⇒ *No single dimension explains readiness.*



READINESS IS SYSTEMIC, NOT DIMENSION-BY-DIMENSION

- ⇒ *No single dimension explains outcomes*
- ⇒ *Strengths and weaknesses interact*
- ⇒ *Balance matters more than isolated performance*

- ⇒ **The DDMI is not about excelling in one dimension.**
- ⇒ **It is about how conditions interact across dimensions.**

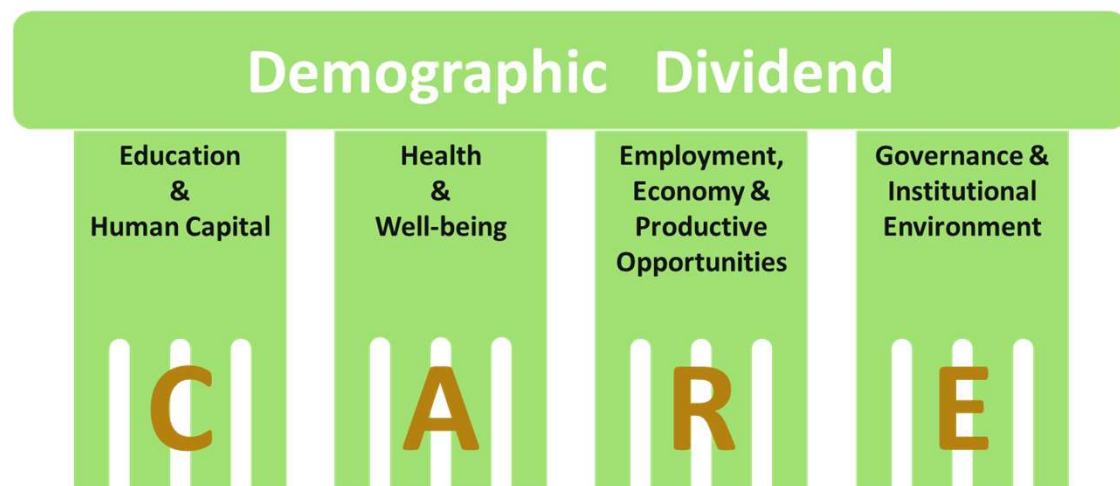


DDMI and Care Economy nexus

⇒ Care is an "enabling" or "disabling" factor in DD framework.

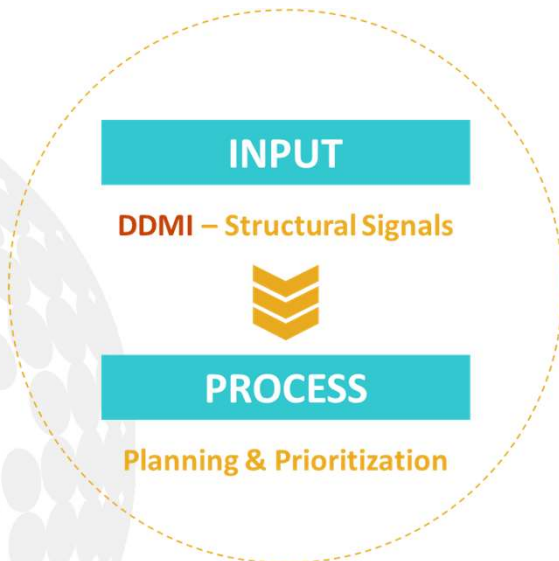


Care is embedded in
all the pillars of
demographic dividend.



WHAT THE DDMI IS USED FOR: INFORMING PLANNING

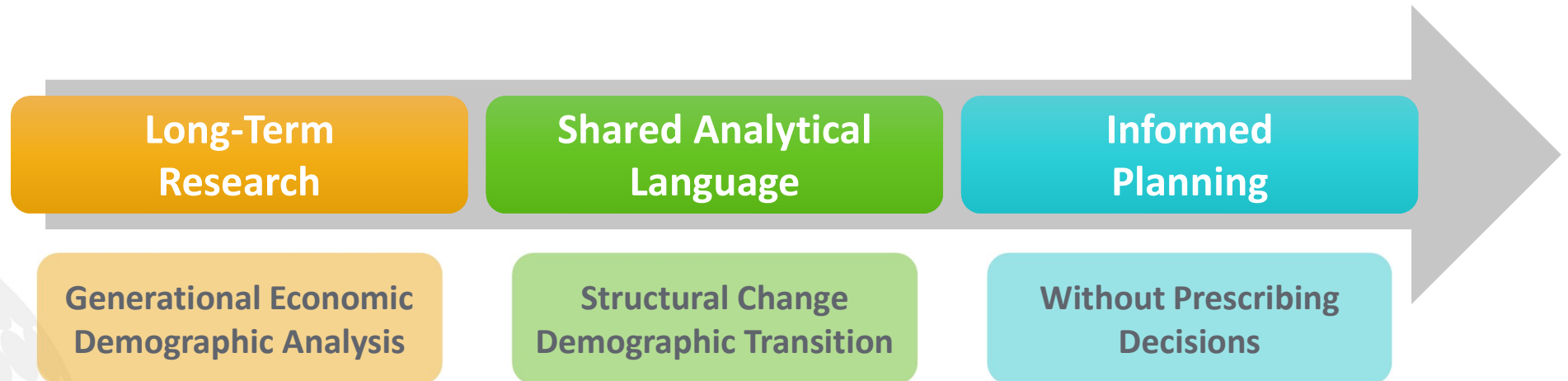
- ⇒ *Identifying structural bottlenecks.*
- ⇒ *Monitoring readiness over time.*
- ⇒ *Supporting long-term planning discussions.*



- ⇒ **Highlighting where structural conditions may limit demographic gains.**
- ⇒ **Without prescribing specific actions.**



WHY THIS TYPE OF RESEARCH MATTERS



Evidence-Based Policy “Window of Opportunity”

The period when the working-age population is at its peak and is closing.

KEY TAKEAWAYS

Understanding
Conditions

not ranking
performance

Systemic
Readiness

not dimension
by dimension

Shared
Analytical
Language

for
planning

The DDMI frames how demographic transition interacts with economic and social structures.

Thank You



Pr. Moses Muriithi - DEDS

mkmuriithi@uonbi.ac.ke

www.prb.org

Reading Demographic Readiness through the DDMI



**Prof. Moses Kinyanjui
Muriithi**

Associate Professor of
Economics, University of
Nairobi

- ⇒ *Interpreting demographic readiness through the DDMI.*
- ⇒ *From indicators to meaning, structure, and early signals.*

Where the Tool Comes To Life



Prof. Latif Dramani
Coordinator, Regional
Consortium for Research in
Generational Economics
(CREG)

- ⇒ *From demographic readiness to care pressures.*
- ⇒ *Reading early signals with the DDMI.*

Session 2 – Guest Speaker – Pr. DRAMANI - CREG



Informing A Smarter World



When the DDMI Comes to Life: Linking Demographic Readiness and Care

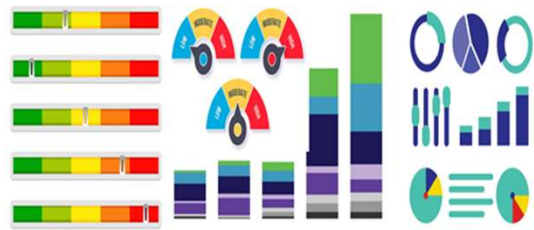
CARE–BSDD Kenya Series

From Demographic Change to Care-Responsive Budgeting

February 10, 2026

From Diagnostic Tool to Lived Reality

- ⇒ The DDMI helps us move from abstract indicators to an understanding of how demographic and economic conditions shape everyday pressures, including care.



What is not easily understood without a tool.



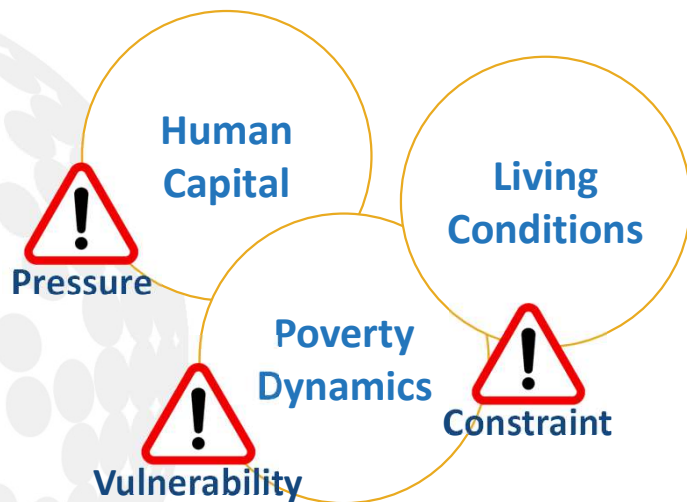
Diagnostic of readiness



Understanding what it means in real life.

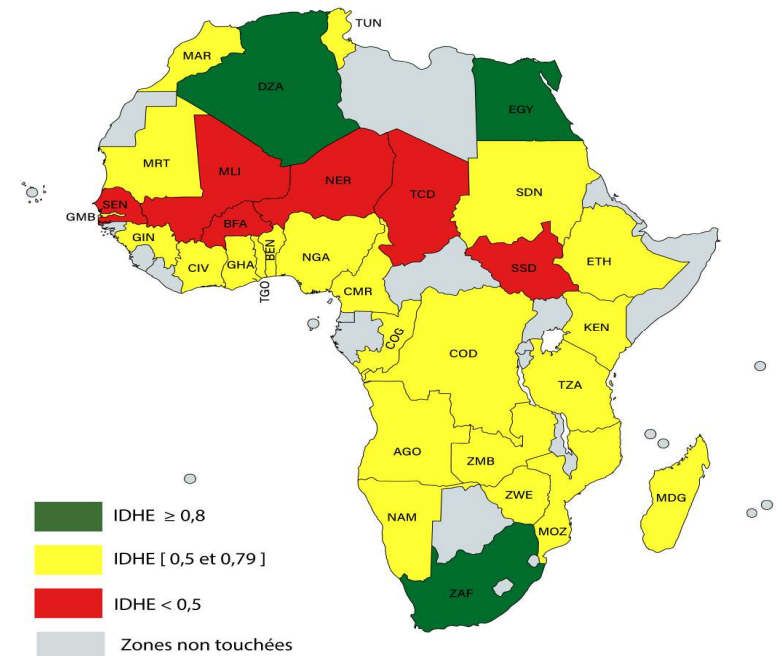
DDMI Signals In a Territory

⇒ DDMI dimensions highlight where structural constraints are concentrated.



Status of EHDl 2024

IDHE 2024 - AFRIQUE

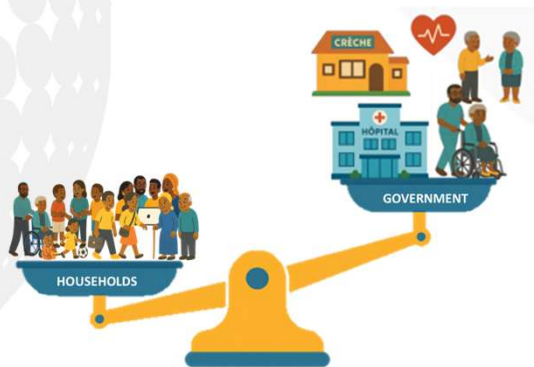


What these Signals Mean for Care

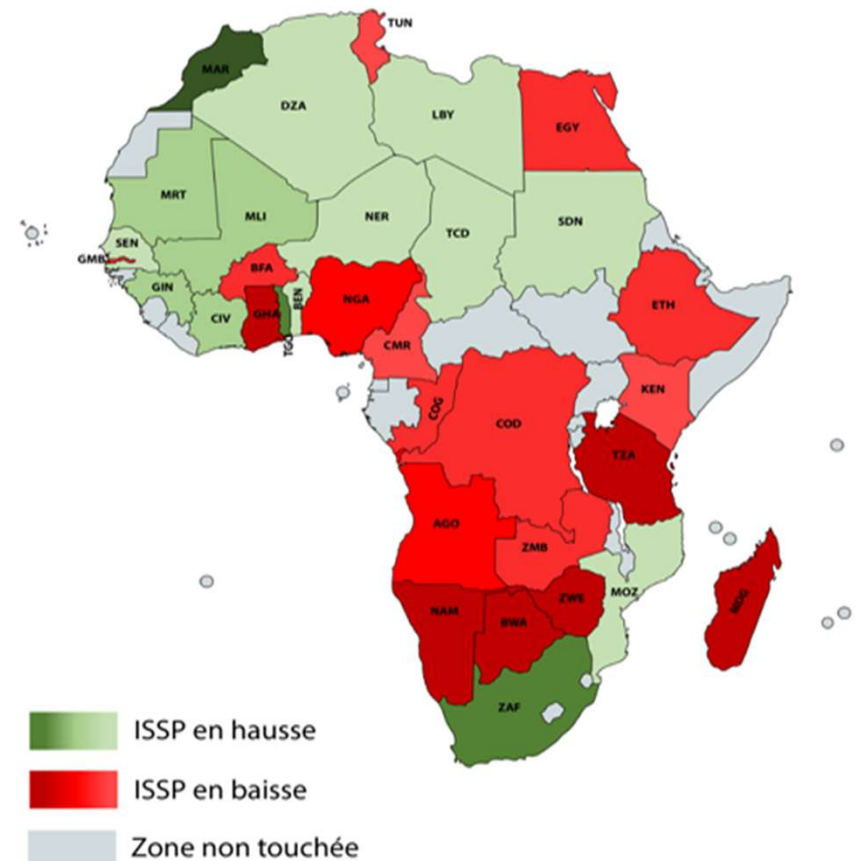
⇒ **When structural conditions are weak, care pressures intensify**

- Expansion of unpaid care responsibilities.
- Households absorb unmet needs.
- Policy response comes late.

⇒ **Pressures emerge long before they are recognized as a policy issue.**



Poverty Transition between 2015 and 2024



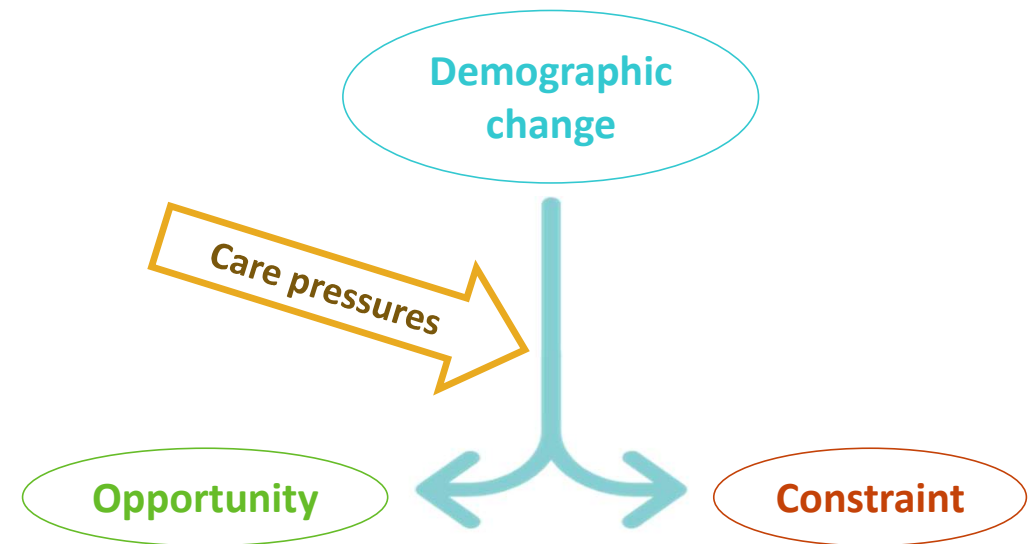
Why this Matters for Demographic Policy

⇒ **Care pressures shape demographic outcomes.**

- Labor participation
- Human capital formation
- Well-being

⇒ **Unmet care needs can absorb potential demographic gains.**

⇒ **Early diagnosis matters.**



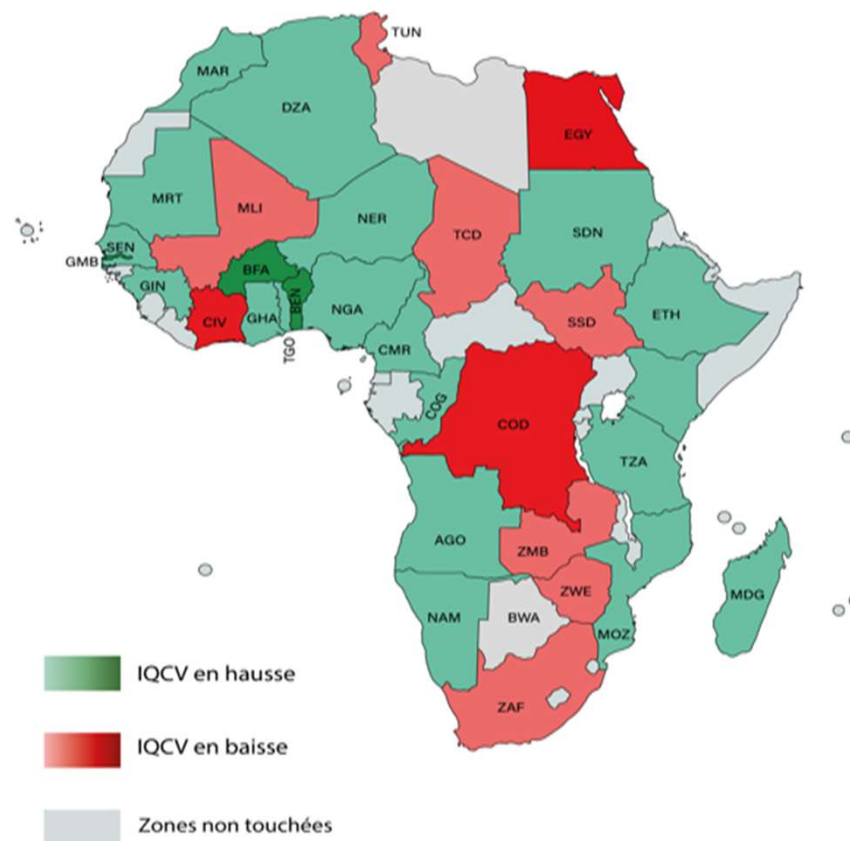
Care shapes the trajectory, not the transition itself.

What this Mini-Case Does Not Do

- ⇒ **This illustration does not:**
- Prescribe policies or budgets.
 - Provide technical analysis.
 - Rank territories or assess performance

⇒ **Its role is illustrative and diagnostic.**

QLEI Gap between 2015 and 2024



Thank You



Pr. Latif Dramani
creg-center.org

www.prb.org

Where the Tool Comes To Life



Prof. Latif Dramani
Coordinator, Regional
Consortium for Research in
Generational Economics
(CREG)

- ⇒ *From demographic readiness to care pressures.*
- ⇒ *Reading early signals with the DDMI.*

The Problem is Not the Tool — It is its Use

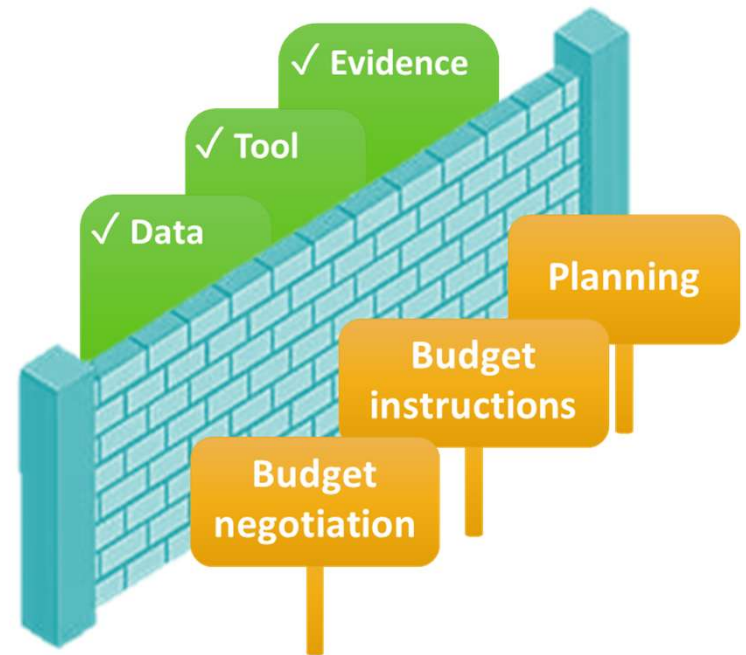
⇒ *The problem is not technical — it is institutional.*

⇒ **What we have seen**

- The DDMI exists.
- The data exist.
- The diagnostic capacity exists.

⇒ **What does not happen**

- Rarely integrated into annual planning.
- Rarely used in budget negotiations.
- Almost absent from budget call circulars.



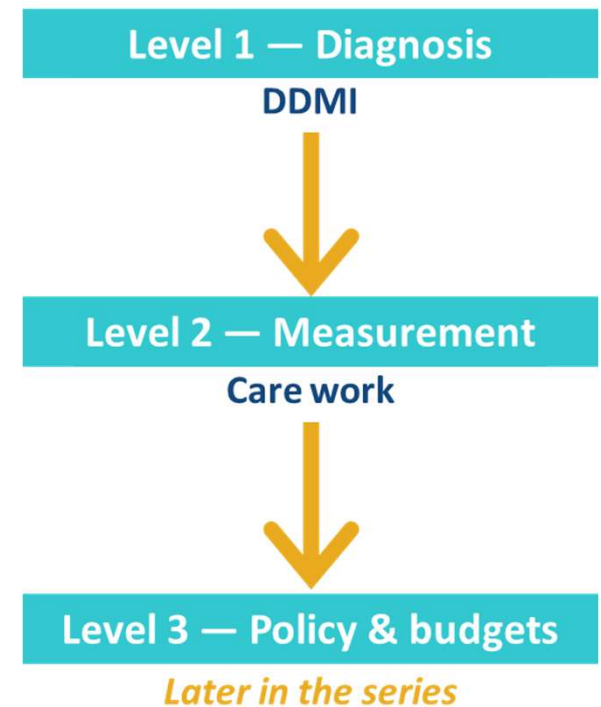
Why We Are Not Yet Talking About Budgets

⇒ Where the DDMI sits

- The DDMI operates at the diagnostic level.
- It helps identify where vulnerabilities and care pressures concentrate.

⇒ What it prepares — but does not do

- Identify where care is actually produced.
- Understand how care is (or is not) financed.
- Explain why care remains economically invisible.



You cannot budget what you have not yet measured.

Webinar 3
Defining & Measuring
Care Work

What To Take Away — And What Comes Next

You cannot talk about the **demographic dividend** without talking about **readiness**



You cannot talk about **readiness** without seeing **care**



You cannot **plan** care without structured tools like the **DDMI**

⇒ Webinar 3

Defining and locating care work within the economy

- What care is — and what it is not
- Paid vs unpaid care work
- Why unpaid care remains economically invisible



Thank You

Reena Atuma

Ratuma@prb.org

www.prb.org