

KENYA LEARNING SERIES



From Measurement to Budget Translation: Completing the Care Evidence Chain

TUESDAY, MARCH 10 | 3 PM EAT / 7 AM EST



Prof. Latif Dramani
Coordinator, Regional
Consortium for Research
in Generational
Economics (CREG)



Aïssata Fall
West & Central Africa
Representative, PRB

CARE–BSDD Kenya Series

From Demographic Change to Care-Responsive Budgeting



Informing A Smarter World



February – March 2026

**Introduce yourself in the chat! (name, organization, and location).
If you have any questions, please submit them through the “Q & A” function.
Feel free to share reflections and comments in the chat at any point!**

**Présentez-vous dans le chat (nom, organisation et lieu).
Si vous avez des questions, merci de les soumettre via la fonction “Q & A”.
N’hésitez pas à partager vos réflexions et commentaires dans le chat à tout moment.**

Housekeeping Announcements



PRB

Session 6

From Measurement to Budget Translation: Completing the Care Evidence Chain



Informing A Smarter World



CARE–BSDD Kenya Series

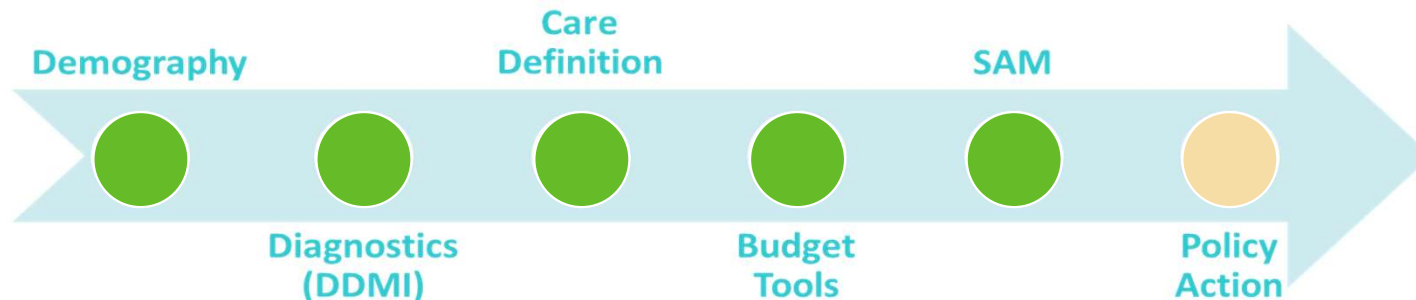
From Demographic Change to Care-Responsive Budgeting

March 10, 2026

Where We Are in the Series

- ⇒ Tier 1 – Context: Demographic Transition and DDMI
- ⇒ Tier 2 – Tools: Defining and Measuring Care
- ⇒ Tier 3 – Action: Budget Reform

Today: Connecting measurement, macroeconomic structure, and budget decision-making



Today's Agenda

⇒ *Framing HSA, NTTA and SAM in one analytical pathway*

Household Satellite Account

Why HSA was developed, how it fits within the System of National Accounts? Brief explanation

Presenting the Care-Integrated SAM

What a Social Accounting Matrix is and what integrating care reveals about the structure of the economy

Key Findings and Policy Implications

Main insights emerging from the SAM and what they imply for understanding the care economy

Completing the Care Evidence Chain

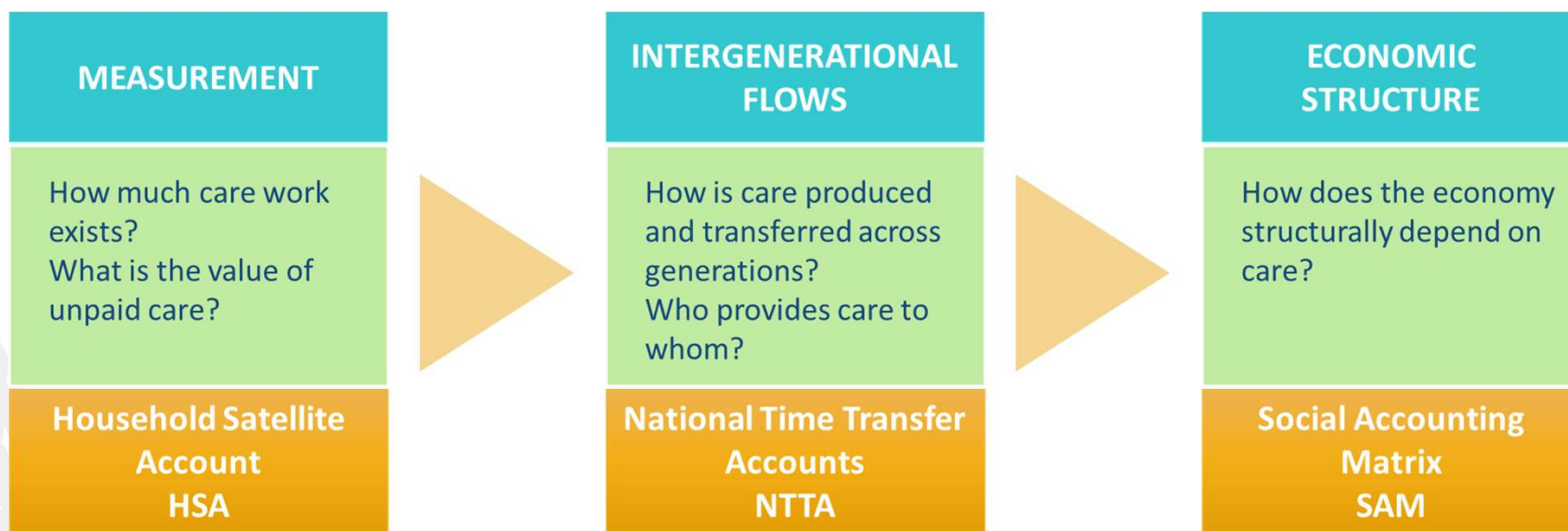
Connecting HSA, NTTA, SAM and DDSB to show how evidence can inform budgeting and policy decisions

Discussion and Q&A

Questions from participants and reflections on the implications for policy and research

COMPLETING THE JOURNEY

⇒ From Visibility to Economic Structure



- The question is therefore not whether one tool is better than another.
- The question is: what different questions each tool helps us answer.

Revealing the Structural Role of Care in the Economy: Integrating Care into a Social Accounting Matrix



Prof. Latif Dramani

Coordinator, Regional
Consortium for Research in
Generational Economics
(CREG)

- ⇒ Who provides care?
- ⇒ Who receives care?
- ⇒ How does unpaid care interact with the broader economic system?

Session 6 – Guest Speaker – Pr. DRAMANI - CREG



Informing A Smarter World



Revealing the Structural Role of Care in the Economy: Integrating Care into a Social Accounting Matrix

CARE–BSDD Kenya Series

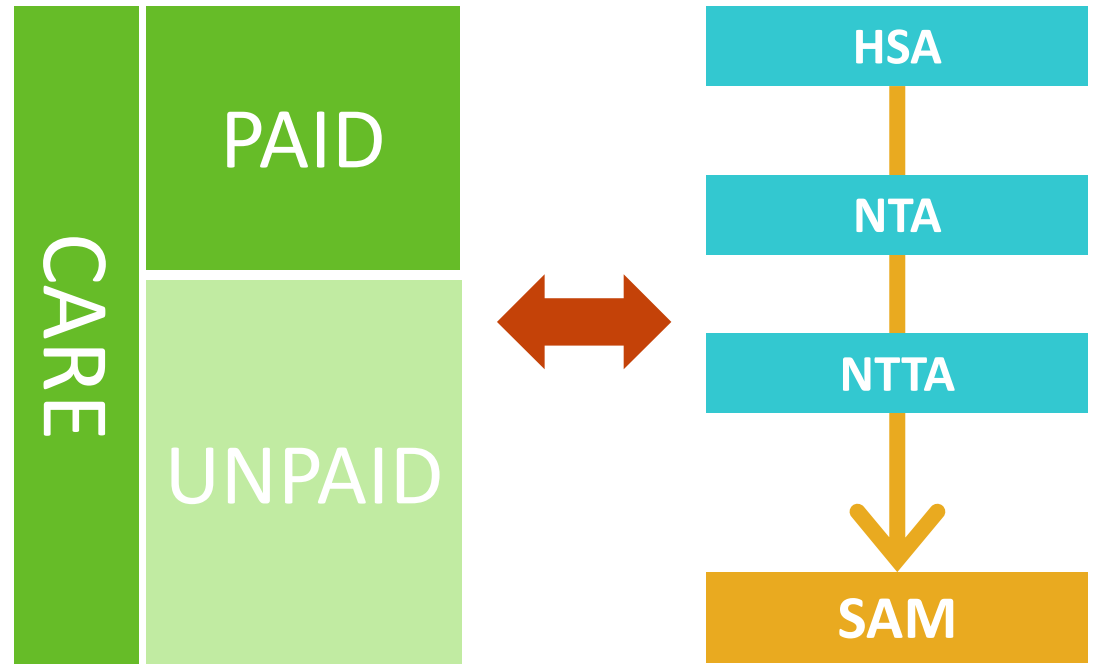
From Demographic Change to Care-Responsive Budgeting

March 10, 2026

From Measurement to Economic Structure

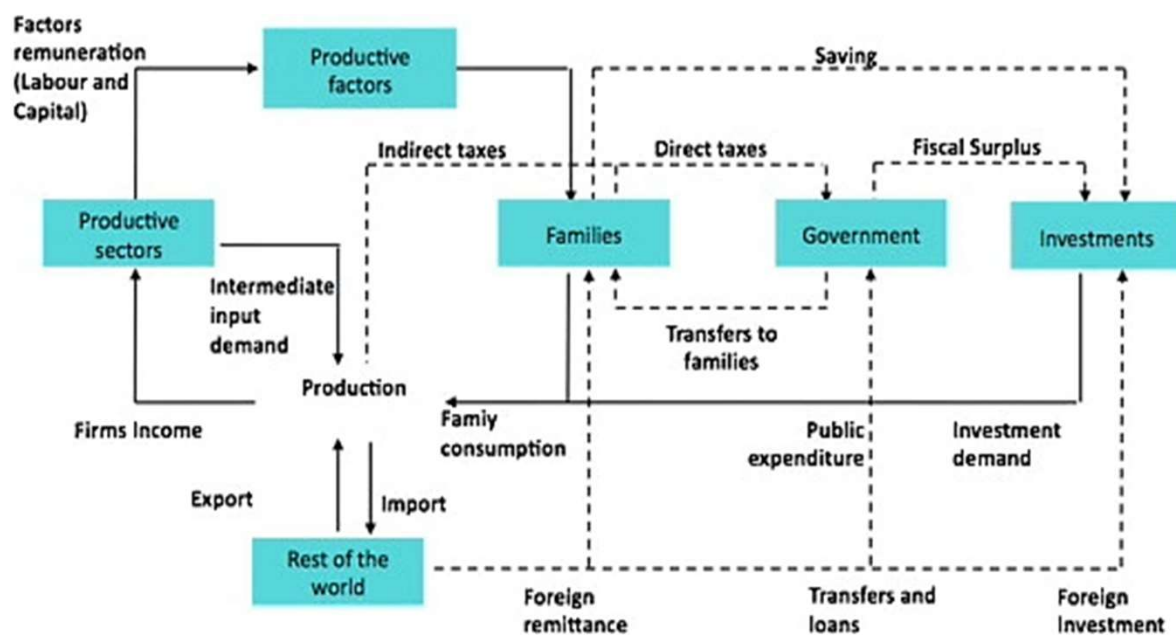
- ⇒ Previous tools measure unpaid care work.
- ⇒ How does care structure the functioning of the economy?

- Household Satellite Account measures unpaid care work.
- NTTA tracks time transfers across generations.
- But how does care interact with the broader economy?



What is a Social Accounting Matrix?

⇒ A comprehensive picture of how income and production circulate across the economy.



Source: Scandizzo and al. (2010)

Aggregate Structure of the Standard Social Accounting Matrix

⇒ Social Accounting Matrix with FIVE aggregate accounts

	C1. ACTIVITIES	C2. PRODUCTS	C3. FACTORS	C4. RESIDENT INSTITUTIONAL UNITS	C5. CAPITAL	C6. REST OF THE WORLD
L1. ACTIVITIES		Domestic sales				Export
L2. PRODUCTS	Intermediate consumption			Final consumption	Investments	
L3. FACTORS	Factor payments					Factor income
L4. RESIDENT INSTITUTIONAL UNITS	Tax and production subsidies	Product tax and subsidies	Factor income	Domestic savings		Transfers received
L5. CAPITAL						Foreign savings
L6. REST OF THE WORLD		Imports	Factor income	Transfers paid		

Aggregate Structure of the Standard Social Accounting Matrix

⇒ Social Accounting Matrix with SEVEN aggregate accounts

EXPENSES												
		1. ACTIVITIES	2. PRODUCTS	3. FACTORS		4. INSTITUTIONS				5. CAPITAL ACCOUNT	6. REST OF THE WORLD	7. Total
INCOME				Labor	Capital	Households	NPO	Enterprises	Government			
1. ACTIVITIES												
2. PRODUCTS												
3. FACTORS	Labor											
	Capital											
4. INSTITUTIONS	Households											
	NPO											
	Enterprises											
	Government											
5. CAPITAL ACCOUNT												
6. REST OF THE WORLD												
7. TOTAL												

NPO=Non-Profit Organization

Why Integrate Care into a Social Accounting Matrix?

⇒ Capture the role of household production and understand how much the economy relies on unpaid labor.



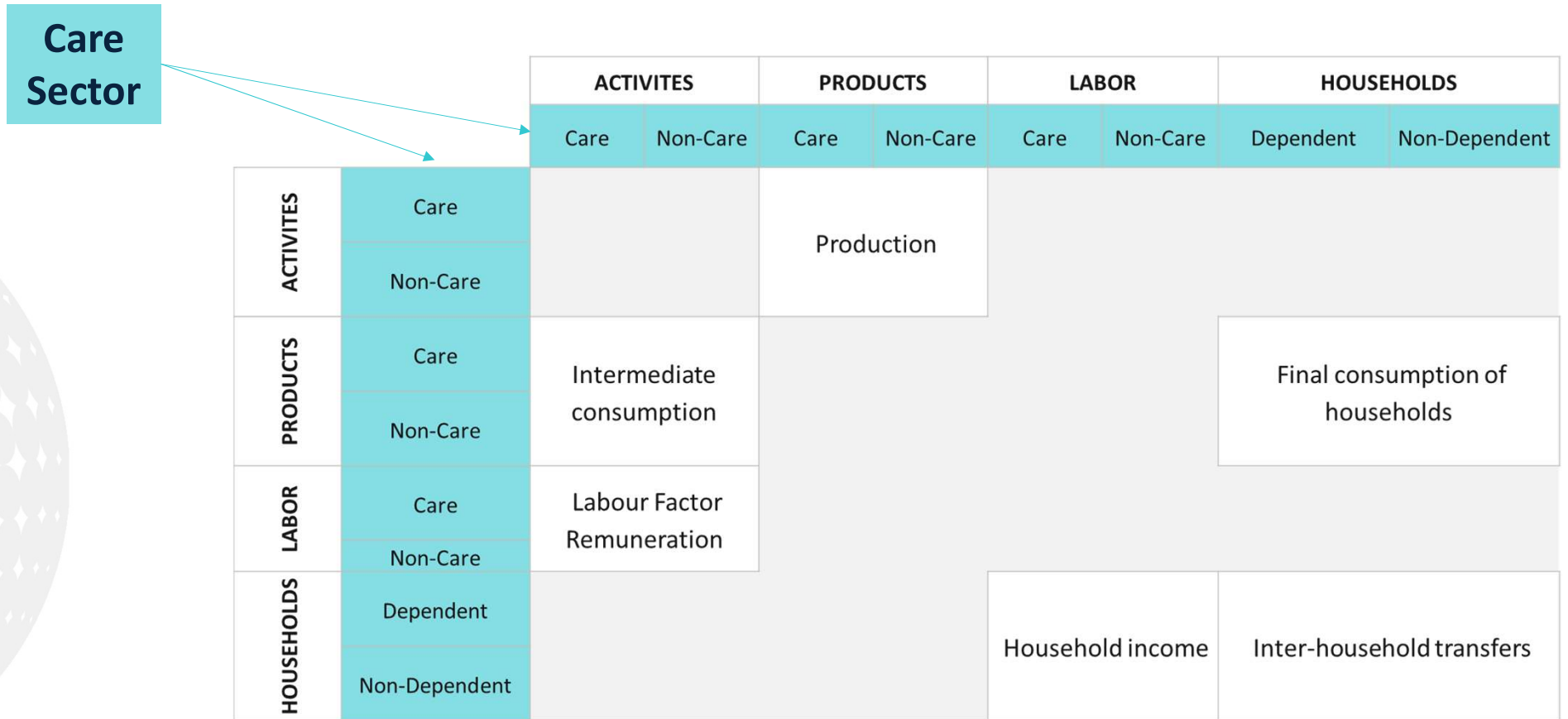
INTER & INTRA HOUSEHOLD TRANSFERS MATRIX		HIGH Dependency Households		LOW Dependency Households	
		Paid	Unpaid	Paid	Unpaid
HIGH Dependency Households	Paid				
	Unpaid				
LOW Dependency Households	Paid				
	Unpaid				

The *standard* SAM only considers **PAID CARE**

The SAM *integrating care* adds **UNPAID CARE**

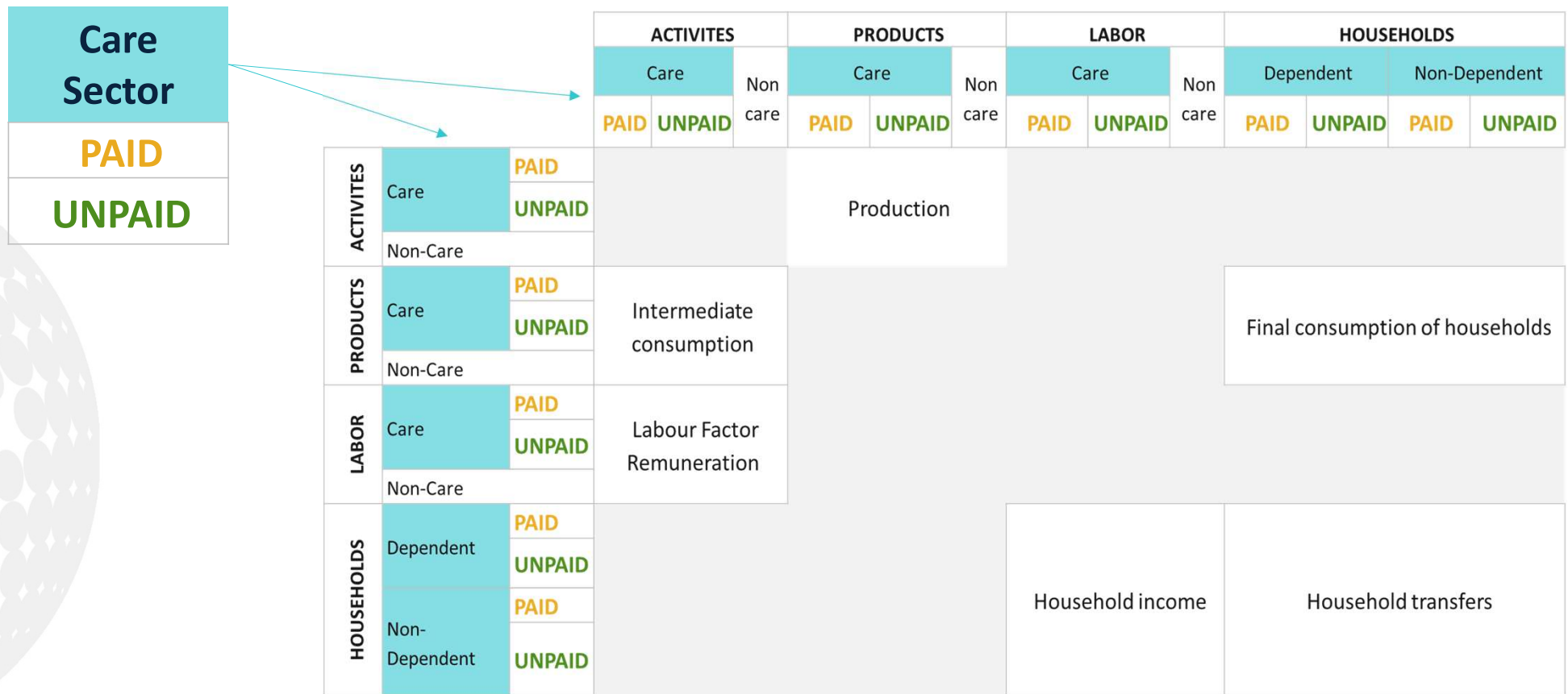
What Changes When Care is Included?

⇒ **Step1 : Disaggregation of a SAM which considers Care Work**



What Changes When Care is Included?

⇒ **Step2 : Disaggregation of a SAM which considers Unpaid Care**



Complementarity with Other Analytical Tools

⇒ The tools do not compete. They complement each other to provide a more complete understanding.

Aspect	HSA	NTA	NTTA	SAM Integrating Care
Objective	Captures economic activities not fully measured in standard national accounts, such as unpaid household labor and informal caregiving.	Focuses on tracking economic flows across age groups, analyzing how resources are allocated, transferred, and consumed by individuals at different life stages.	Highlight the contribution of care to social well-being by quantifying the time invested.	Promotes care economically by integrating it into national accounts, for formal recognition.
Unit of Analysis	Household	Individuals, often categorized by age	Individuals, often categorized by age	Household
Measurement Mode	TUS and macroeconomic	Generational accounts	Time-use surveys and Generational time accounts	Economic calculations, monetary valuation of care activities in matrices.
Limitations	Assumes homogeneity in each household Head of household as the heart of any decision Assumes a representative household approach	Excludes invisible transfers and diverse family structures	Large volumes of data and high expense associated with data collection. - Underestimates some care activities due to simultaneity.	Assumes homogeneity in each household - The head of household as the heart of any decision - Assume representative household approach
Impact on Public Policies	Highlighting the economic value of unpaid work	Provides complementary insights for designing more equitable and efficient public policies	Raises awareness about the importance of care, limited influence on economic decisions. Allows micro, macro and specific analysis on unpaid market.	Influences resource allocation and encourages more inclusive social policy formulation.

Key Findings from Kenya and Senegal

- ⇒ **When care is integrated into the economic system, the scale and structure of the economy change significantly.**
- Unpaid care work represents a very large share of total economic production.
 - Households play a central role in sustaining economic systems.

Labor account	Kenya		Senegal	
	Value (millions of USD)	Percentage	Value (millions of USD)	Percentage
Paid labor	32,244	40%	6,240	44%
Unpaid labor	49,138	60%	7,921	56%
Total remuneration of the labor factor	81,383	100%	14,159	100%

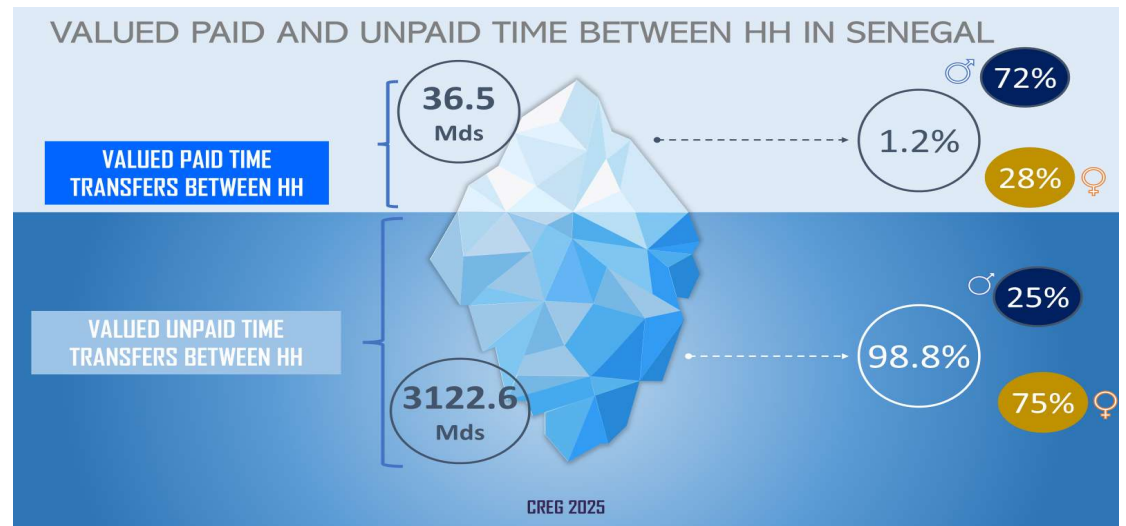
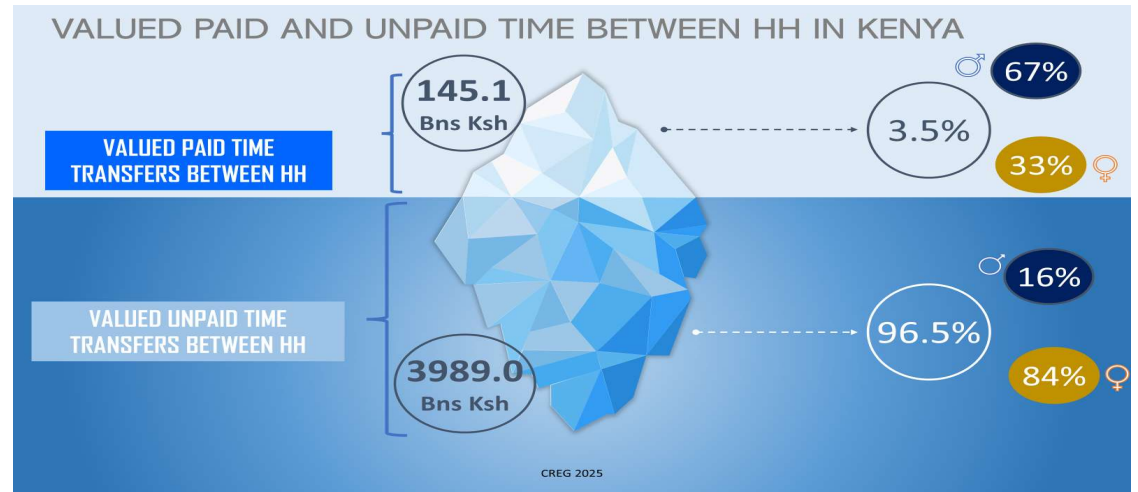
PAID and UNPAID labor in the total remuneration of labor

Implications for Policy

⇒ Care is not only a social issue. It is a fundamental economic issue.

⇒ Recognizing the economic role of care raises important policy questions:

- How is care supported within the economy?
- How is care distributed across households and gender?
- What investments strengthen care systems?



Completing the Care Evidence Chain

⇒ **These tools allow us to move from measurement to policy action.**

- **Household Satellite Account**
 - Making unpaid care work visible.
- **NTA**
 - Measuring intergenerational **PAID** transfers.
- **NTTA**
 - Measuring intergenerational **UNPAID** time transfers.
- **Care-Integrated SAM**
 - Revealing the structural role of care in the economy.
- **BSDD**
 - Translating evidence into budgeting decisions.



Thank You



Pr. Latif Dramani

creg-center.org

www.prb.org

Budgeting Sensitive to Demographic Dividend – BSDD



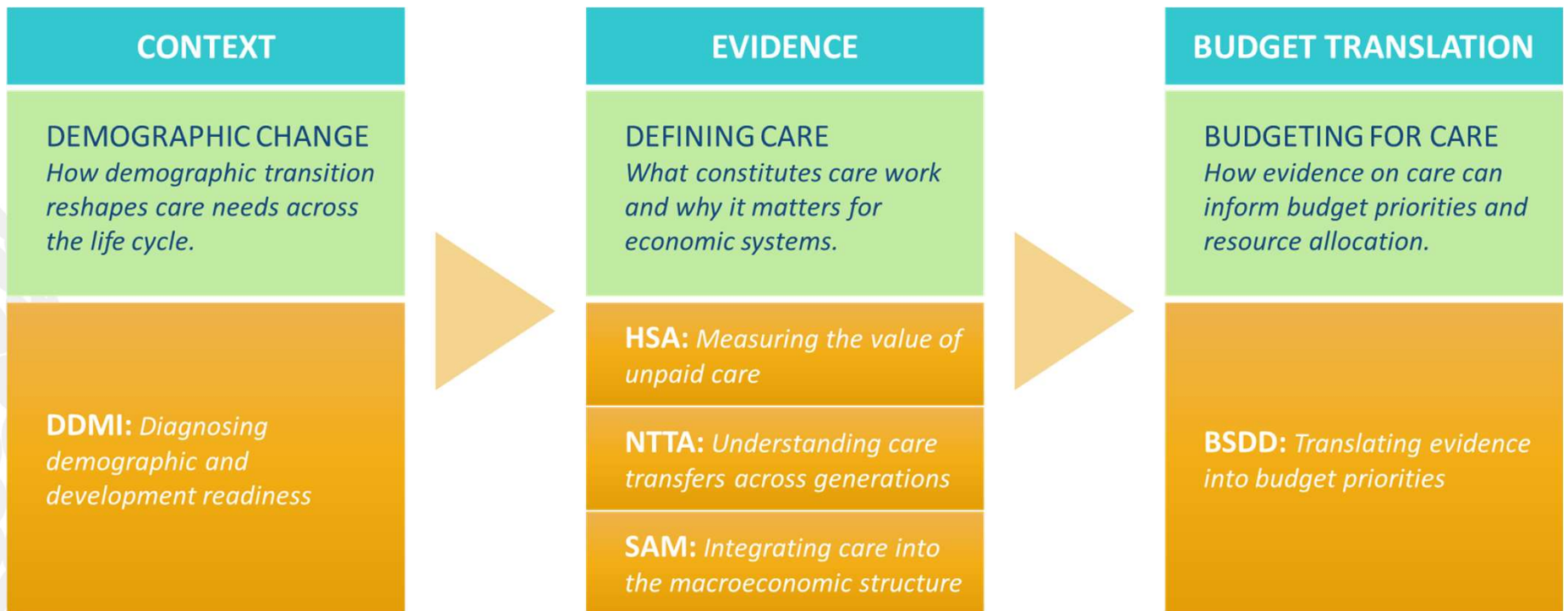
Prof. Latif Dramani

Coordinator, Regional
Consortium for Research in
Generational Economics
(CREG)

- ⇒ Care is not only a social issue but also an economic one.
- ⇒ Economies depend heavily on the unpaid work performed within households.
- ⇒ Policies supporting care infrastructure can have important economic implications.

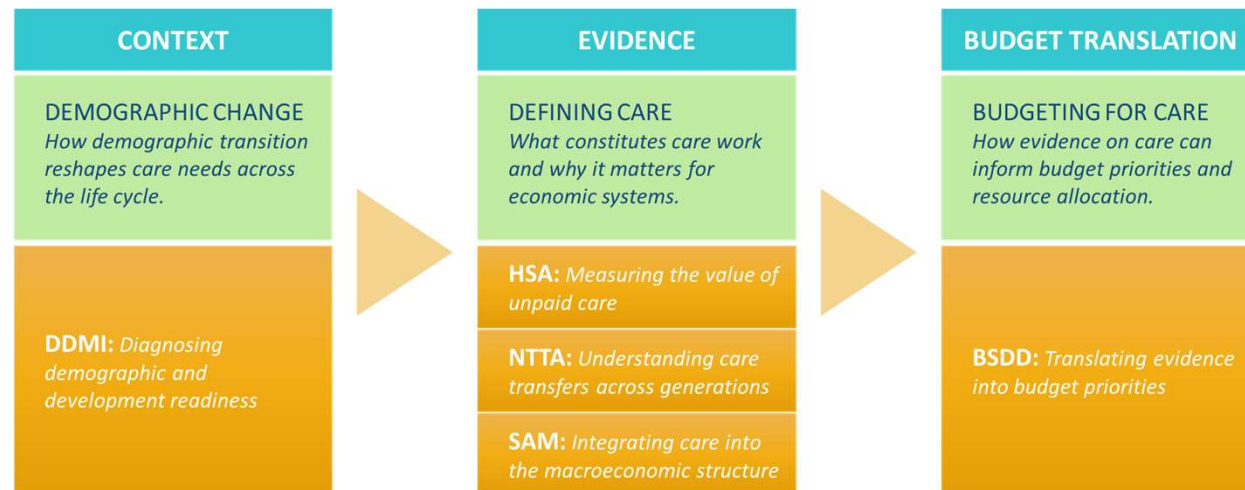
The Full System Architecture

⇒ Each tool answers a different policy question.



Q&A

- ⇒ Questions, reflections, and discussion
- ⇒ We welcome your thoughts on today's session and the series.



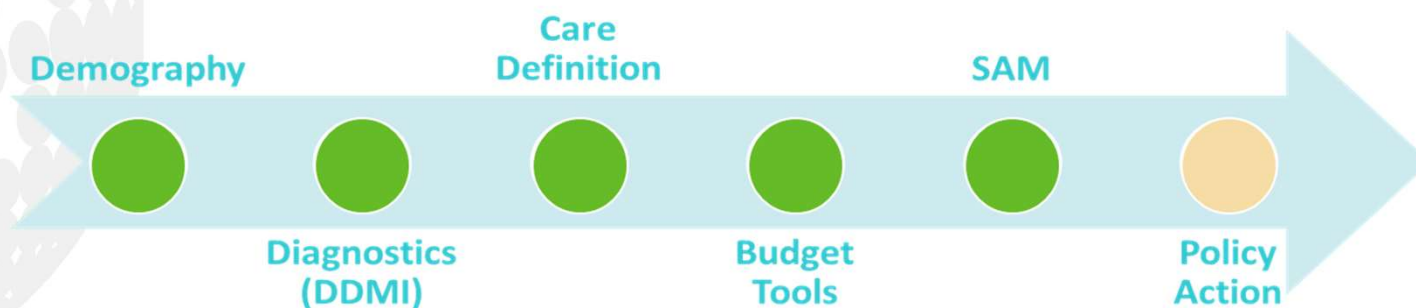
Closing Reflections: From Demography to Care-Responsive Planning

⇒ **Demography shapes care needs.**

- Making care visible in the economy
- Understanding care systems and transfers
- Integrating care into economic analysis and planning

⇒ **Care is a foundational component of economic systems.**

- Tools developed through the work of African research institutions such as CREG.
- Contribute to the DD AU Roadmap
- Stronger alignment between demographic evidence, social investment, and economic planning.



Thank You and Continuing the Conversation

THANK YOU!

- Thank you for your participation!
- Thank you for your continued presence throughout the series!
- Thank you for your thoughtful questions!
- Thank you for your reflections and engagement!

⇒ **Additional webinar with Dr. Wainaina**
National Treasury of Kenya

⇒ **Upcoming NTA Africa Meeting**





Thank You

Aïssata FALL – PRB

afall@prb.org

www.prb.org